

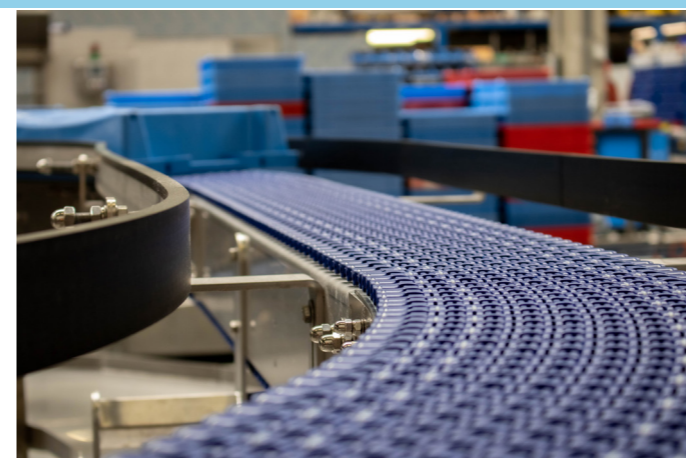
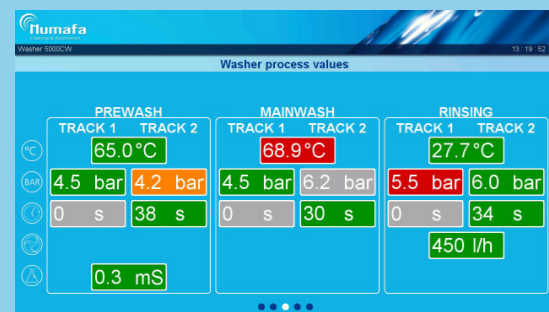


Numafa offers a Management Information System with its machines. With this system, the operator can easily monitor the desired parameters for your (washing) process and gives tools for guidance.

The information can be displayed on a TV screen and separately on an tablet, mobile device and/or cellphone.

The following data will be available and will be shown on the screen:

- Consumption of water, heating, electricity, and detergent
- Production counters (indication washed number of trays)
- Washing section temperatures
- Pump pressures in each wash section
- Dwell time in each wash section
- Production times, starts and stops of the entire installation
- Operation time per shift



# Numafa

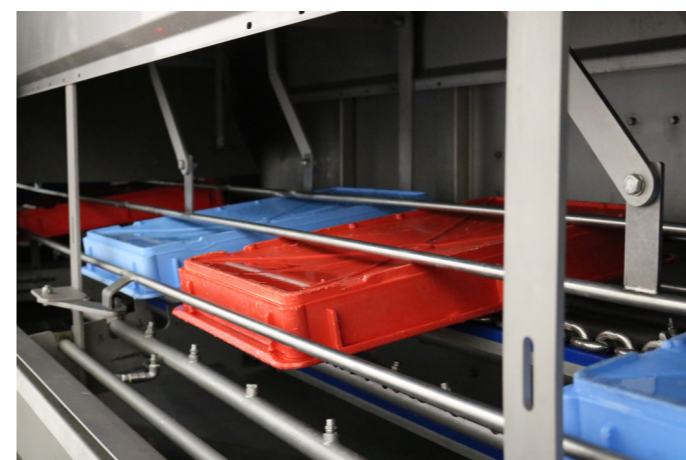
Cleaning & Automation

For a 100% drying result, Numafa offers special drying tunnels in which products can be transported. This machine is used in combination with an airflow section which is required to remove the majority of adherent water from the crates. Through the several blowing openings, heated air of about 100° C is blown towards the passing crates, which guarantees a dry solution.



The High Pressure Label Remover (HPLR) removes different kinds of labels that are placed on the crate during its cycle in the supply chain. To make sure all kinds of labels are removed, Numafa used different configurations of pressure and nozzles within the HPLR.

With the removal of labels, we can offer multiple solutions such as: a centrifugal pump, a drum strainer, a belt filter or a Rotating Fine Filtration Unit (RFFU).



Numafa Cleaning & Automation B.V  
 • Sikkell 1 • 3274 KK • Heinoord • Netherlands •  
 • P.O. Box 5930 • 3273 ZG • T: +31(0)18 66 50 850 •  
 www.numafa.com • info@numafa.com



Numafa Cleaning & Automation, located in Heinenoord The Netherlands, is specialized in developing and manufacturing industrial cleaning and handling systems.

Created for the “fast moving consumer goods”-market, Numafa provides a range of crates-, pallet- and container washers.

Our crate washers range from 50 to 7,500 crates per hour. Ranging from light to heavily soiled, it can all be cleaned by our machines.



The Numafa container washer line ranges from the cleaning of 200 liter standard carts to 1000 liter containers. With a range of cleaning 25 to 300 containers per hour.

We offer two kinds of pallet washers, horizontal and vertical.

The vertical pallet washer is designed to clean up to 100 pallets per hour, whereas the horizontal washer can clean up to 500 pallets per hour.



As part of our drying options, we can offer you centrifugal drying systems. In three options, horizontal -, vertical – and stack centrifuge. This type of drying is extremely energy efficient, compared to conventional drying while the rotating drum is driven by an electric motor and due to the centrifugal force, the washing water is flung off the products



Numafa specializes in part washers. Divided in two categories, the part washers can be separated by the TOP and MMD machines.

The Numafa Metalas TOP machines decreases the most polluted parts in a short period of time.

The machine is compact, hygienic and robust by construction and will be loaded from its top. By the means of timers, the washing of this machine is adjustable.



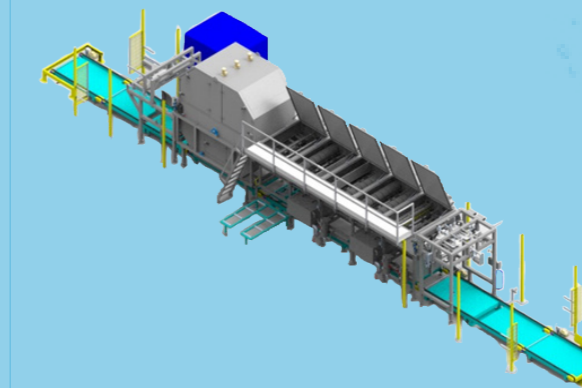
The Numafa Metalas MMD machines decreases and phosphates the most polluted parts in a short period of time.

The Numafa Metalas MMD machines is deliverable in both a single tank model as well as a multi tank model. Many options and variations are possible.

With its ingenious design, it is possible to place the machine into a corner. Which results that the machine requires a minimum amount of floor space. The MMD machines are loaded from the front and are fully insulated.



Numafa also specializes in layer pad washers. We offer machines for sorting, washing and final inspection of layer pads. In this way we follow the potential operation process of the customer.



The washing machines of the layer pads can be distinguished by a fully automated and a semi-automated machine. The fully automated machine is suitable for cleaning a large amount of layer pads up to 1750 layer pads per hour and being sorted before. The semi-automated machine is suitable for cleaning a moderate amount of layer pads up to 625 layer pads per hour and allowed to have the sorting process while loading the pads into the machine. Of course, the final production capacity depends on both the quality of the pad and the speed of the operator.

The layer pad sorting station (is a semi-automated machine that) allows the operator to sort out the damaged layer pads before cleaning. The layer pads can be sorted based on type, thickness, color or damage. The machine can handle up to 1250 layer pads per hour, depending on the quality of the layer pads and the speed of the operator.

The final inspection unit (is a semi-automated machine that) enables the operator to check the condition of the layer pads after the washing process. The unit can be installed to sort out damaged layer pads from the process or layer pads filled with water. It can be installed in-line and has an efficient final control station with a capacity up to 1250 layer pads per hour.

Both sorting station and final inspection unit can be installed in-line with an automated washing machine or in stand-alone configuration.

